

Best Classic

MODEL

Side Folding Gates

Security While Maintaining an Open Appearance

Best Classic is available in a range of patterns and finishes - Folding gates provide security & ventilation. The notable is the ability to visually observe what is behind the door when fully closed. Ideal for areas that have no headroom as gate can be tucked neatly into a side housing unit.

SPECIFICATIONS

CURTAIN

The top and bottom of each section is fitted with an aluminum panel 4" high (102mm). This panel consists of an aluminum extrusion 1/16" (1,6mm) thick and composed of modules with a 15° angle between them to facilitate the operation of the closure. Each curtain is constructed of either rods or modules or a combination of the two to achieve a variety of patterns.

See Page 3 for curtain patterns and additional details.

LOCKING

- A. Lead post shall be equipped with a 7-pin Master-Keyable cylinder lock.
- B. Lead post shall engage a full height wall jamb.
- C. Trailing post shall be self-locking at the top and bottom inside the storage pocket.
- D. Free floating intermediate posts shall be located at all curves and at recommended intervals of 10 feet (3m) or 5 feet (1,5m) for counter top units. Intermediate posts shall be equipped with self-adjusting spring loaded drop bolts activated from the inside only. Drop bolts shall engage dust-proof stainless steel receptacles.

TRACK

- A. Curtain shall be hung from an overhead track 1-5/16" (33mm) wide by 1-9/16" (40mm) high. Track shall be tempered aluminum alloy 6351-T6.
- B. Curves where required shall be 14" (356mm) radius standard.

STACKING

Stacking shall not exceed a depth of 1.15" per foot of closure width plus 3" for each post (lead, end or intermediate). (95mm/lin. m + 76mm per post). Full egress doors add 7" (178mm).



FINISH

Finish shall be standard clear anodized or paint in white, black or bronze.

Following options are available if modifications or improvements are required:

LOCKING OPTIONS

- Top and bottom locking posts with key cylinders one or both sides are available for either end of the curtain.
- Large sections may be divided by incorporating bi-part units as intermediate posts.
- Second hook bolts on lead, end or bi-parts (Recommended for closures over 12' (3,7m) high or for more security).
- Solid aluminum block covering cylinder lock for additional protection (Specify guard cylinder protection).
- Architect to decide side of lock cylinders.
- Additional intermediate post with shoot bolt to floor or counter.

TRACK CURVES

- 10" (254mm) radius curves (Indicate location on plans).
- Special radius curves (Indicate location and radius on plans).

EGRESS COMPLIANCE

- Full egress door 36" x 80" (914mm x 2032mm) where required by local building code.

CONTACT US

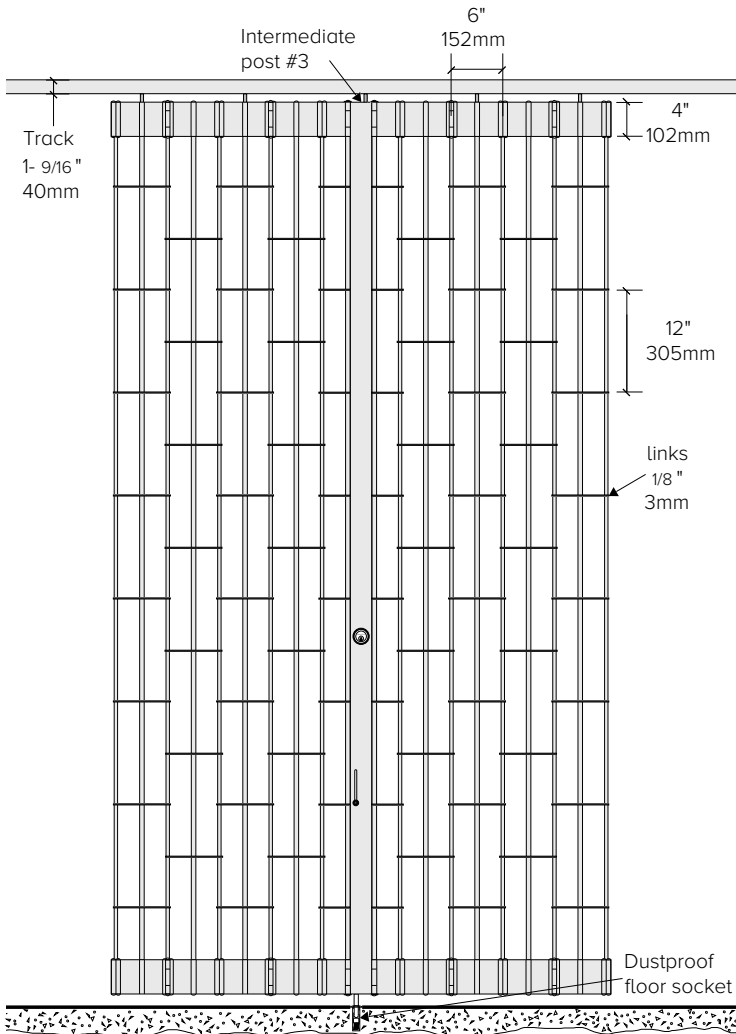
Best Rolling Manufacturer, Inc. P: 305-698-3550
9780 NW 79 Avenue F: 305-698-3552
Hialeah Gardens, FL 33016 www.bestdoor.us

Best Classic

Details - Typical Scenario Model - Side Folding Gates

ELEVATION

Best S-126 curtain pattern shown for reference.



COMMON FINISHES



Mill



Clear Anodized



White



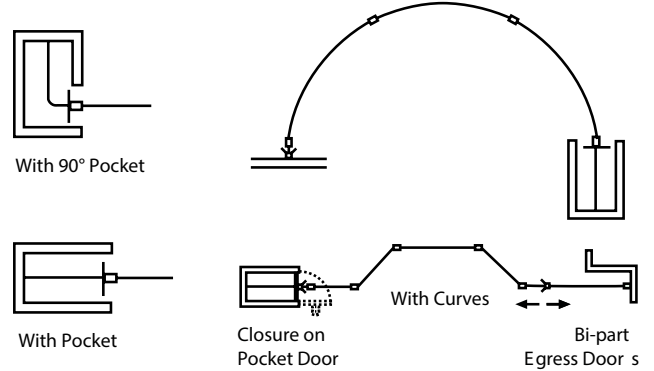
Black



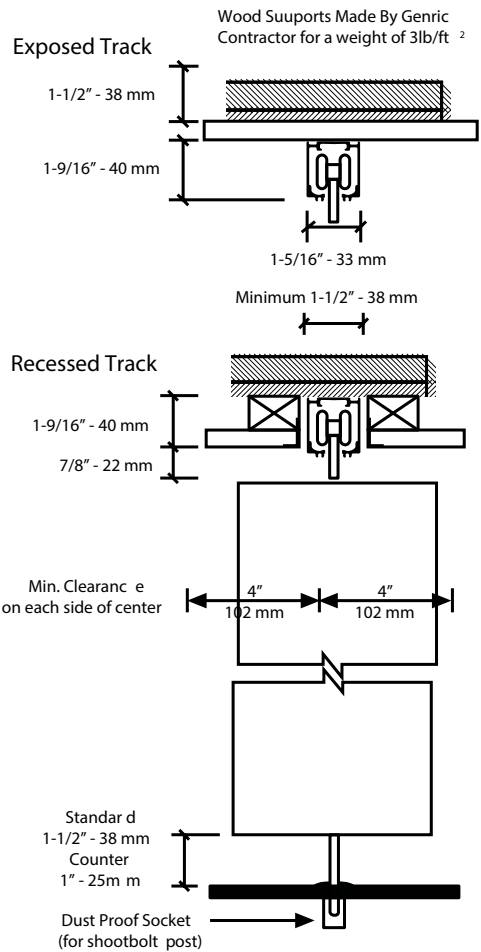
Bronze

TYPICAL LAYOUT

For further options, consult factory.



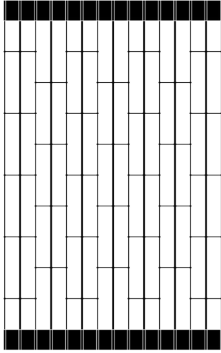
VERTICAL SECTION



Best Classic

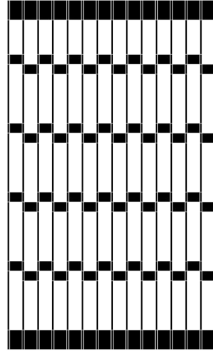
Details - Curtain Types Model - Side Folding Gates

CURTAIN PATTERNS



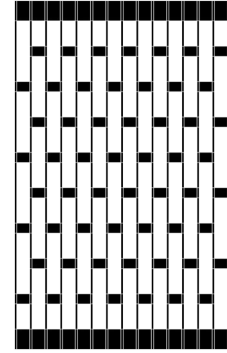
BEST S-126

Curtain is constructed of vertical rods of 5/16" (8mm) in diameter. The spacing between the rods is 2-5/8" (67mm) in a brick pattern. These rods are linked together by flat horizontal bars of 1/8" x 5/8" x 6-5/8" (3mm x 16mm x 168mm). These bars are spaced vertically every 12" (305mm) by aluminum sleeves of 1/2" (13mm) in diameter.



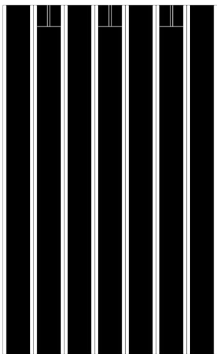
BEST S-12

Curtain is made of vertical rods of 5/16" (8mm). Each rod is contained in an aluminum tube that measures 1/2" (13mm) in diameter. Spaced every 3" (76mm), these rods are linked by two series of horizontal modules of 2" (51mm) high. These module series are spaced vertically every 12" (305mm).



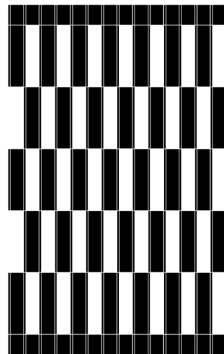
BEST S-525

Curtain is constructed of vertical rods of 5/16" (8mm) in diameter. The spacing between the rods is 2-5/8" (67mm) in a brick pattern. These rods are linked together by flat horizontal bars of 1/8" x 5/8" x 6-5/8" (3mm x 16mm x 168mm). These bars are spaced vertically every 12" (305mm) by aluminum sleeves of 1/2" (13mm) in diameter.



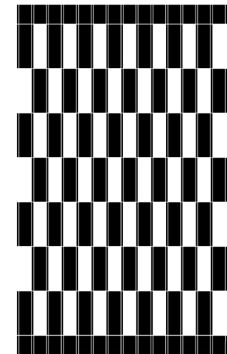
BEST SOLID

Curtain is constructed of 6" (152mm) wide modules linked together by a continuous aluminum hinge. These hinges hold aluminum panels 5-3/8" (136mm) wide and 1/16" (1,6mm) thick completely recessed throughout their full height.



BEST 1212

Curtain is constructed of modules 1/16" (1,6mm) thick arranged in a checkerboard design of 3" (76mm) c/c. These modules are linked together by hidden aluminum and steel rods of 5/16" (8mm) diameter. The height of the panels will be 12" (305mm).



BEST 99

Curtain is constructed of modules 1/16" (1,6mm) thick arranged in a checkerboard design of 3" (76mm) c/c. These modules are linked together by hidden aluminum and steel rods of 5/16" (8mm) diameter. The height of the panels will be 9" (229mm).