

## SIDE FOLDING GATE

### MODEL

Side Folding Gates are an excellent means of security and crowd control, allowing visibility for applications that may not be conducive for Coiling Grilles and Doors. Side Folding Gates can accommodate a multitude of special applications such as sweeping radius curved storefronts, corner locations and limited headroom conditions.

A range of curtain patterns are available, consult the factory for details.

### SPECIFICATIONS

#### LISTINGS

- Meets visibility code requirement.
- Due to the perforated curtain this door does not qualify for wind, fire, smoke and/or sound rating.

#### SIZE

- 30' wide, 30' high standard construction. Large openings available of 60' wide or more, consult factory.

#### WEIGHT

- Load requirements are greater when the closure is in the stacked position.
- The support structure must be able to carry the weight of a fully stacked closure.
- Stacked Linear Weight = weight per surface of closure x height of closure x 8.

#### MATERIALS & FINISHES

- Curtains have typical exterior finish in Mill Finish, White and Black.
- Additional Options include: Galvanized, Stainless Steel, Galvalume, Prime Painted Galvanized and Powder Coated.
- Exterior skin is available in 1/16" thickness.

#### CURTAIN

- The top and bottom of each section is fitted with an aluminum panel 4" (102mm) high. This panel consists of an aluminum extrusion 1/16" (1,6mm) thick and composed of modules with a 15 degree angle between them to facilitate the operation of the closure.



#### OPERATION

- Manually operated, easily slides into wall pocket.

#### LOCKING

A - Lead post shall be equipped with a hook bolt lock with cylinders each side.

B - Lead post shall engage a full height wall jamb.

C - Trailing post shall be self-locking at the top and bottom inside the storage pocket.

D - Free floating intermediate posts shall be located at all curves and at recommended intervals of 10 feet (3m) or 5 feet (1,5m) for counter top units; intermediate posts shall be equipped with self-adjusting spring loaded drop bolts activated from the inside only; drop bolts shall engage dustproof stainless steel receptacles.

#### POCKET REQUIREMENTS

- Interior pocket width recommended 10" - 254mm with a standard 14" - 356mm radius and at 12" - 305mm.

### CONTACT US

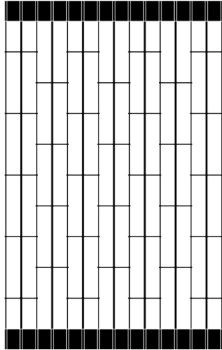
Best Rolling Manufacturer, Inc.  
9780 NW 79 Avenue  
Hialeah Gardens, FL 33016

P: 305-698-3550  
F: 305-698-3552  
www.bestdoor.us

**Details - Curtain Types**  
**Model - Side Folding Gates**

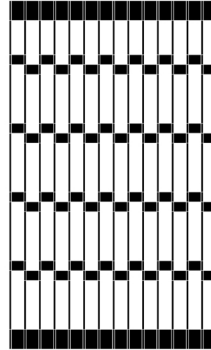
**SIDE FOLDING GATE**

**CURTAIN PATTERNS**



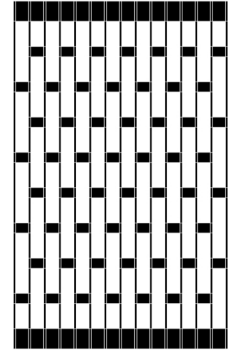
**BEST S-126**

Curtain is constructed of vertical rods of 5/16" (8mm) in diameter. The spacing between the rods is 2-5/8" (67mm) in a brick pattern. These rods are linked together by flat horizontal bars of 1/8" x 5/8" x 6-5/8" (3mm x 16mm x 168mm). These bars are spaced vertically every 12" (305mm) by aluminum sleeves of 1/2" (13mm) in diameter.



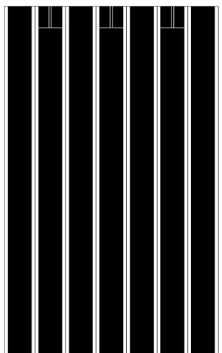
**BEST S-12**

Curtain is made of vertical rods of 5/16" (8mm). Each rod is contained in an aluminum tube that measures 1/2" (13mm) in diameter. Spaced every 3" (76mm), these rods are linked by two series of horizontal modules of 2" (51mm) high. These module series are spaced vertically every 12" (305mm).



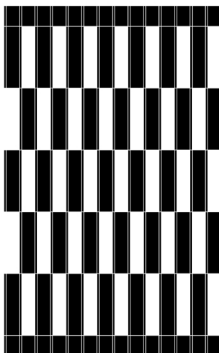
**BEST S-525**

Curtain is constructed of vertical rods of 5/16" (8mm) in diameter. The spacing between the rods is 2-5/8" (67mm) in a brick pattern. These rods are linked together by flat horizontal bars of 1/8" x 5/8" x 6-5/8" (3mm x 16mm x 168mm). These bars are spaced vertically every 12" (305mm) by aluminum sleeves of 1/2" (13mm) in diameter.



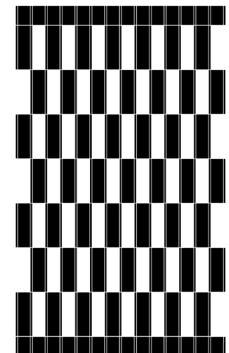
**BEST SOLID**

Curtain is constructed of 6" (152mm) wide modules linked together by a continuous aluminum hinge. These hinges hold aluminum panels 5-3/8" (136mm) wide and 1/16" (1,6mm) thick completely recessed throughout their full height.



**BEST 1212**

Curtain is constructed of modules 1/16" (1,6mm) thick arranged in a checkerboard design of 3" (76mm) c/c. These modules are linked together by hidden aluminum and steel rods of 5/16" (8mm) diameter. The height of the panels will be 12" (305mm).

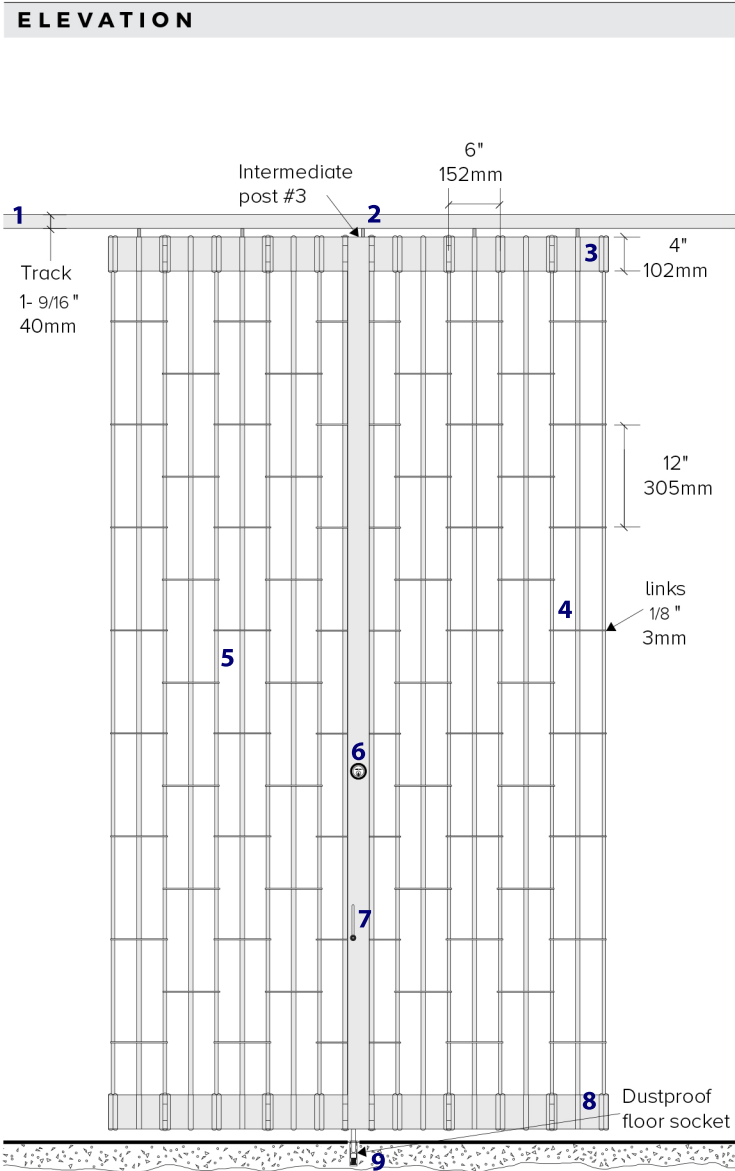


**BEST 99**

Curtain is constructed of modules 1/16" (1,6mm) thick arranged in a checkerboard design of 3" (76mm) c/c. These modules are linked together by hidden aluminum and steel rods of 5/16" (8mm) diameter. The height of the panels will be 9" (229mm).

# SIDE FOLDING GATE

## Details - Typical Scenario Model - Side Folding Gates



1. **TRACK 1-9/16"** - Curves where required shall be 14.0" radius standard, consult factory for custom curves.
2. **INTERMEDIATE POST #3**
3. **ALUMINUM PANEL 4.0"** - Composed of modules with a 15 degree angle between them to facilitate the operation.
4. **LINKS 1/8" THICKNESS** - Spaced 12.0" vertically.
5. **CURTAIN** - Available in other lattice patterns.
6. **LOCKING** - Lead post shall be equipped with a hook bolt lock with cylinders on each side.
7. **HANDLE** - For ease of operation.
8. **ALUMINUM PANEL 4.0"** - Composed of modules with a 15 degree angle between them to facilitate the operation of the closure.
9. **DUSTPROOF FLOOR SOCKET**

