

ROLLING SECURITY GRILLE

MODEL

Coiling Grilles provide an excellent means of security and crowd control, allowing visibility and providing a sleeker aesthetic than solid coiling doors. Grilles can be equipped with a variety of different features to accommodate a multitude of applications. Enclosed Retail Shopping Malls, Airports, Train Stations, Behind Glass "Smash & Grab" Protection, Cafeterias, Office Lobbies, Loading Docks and Schools are just some of the applications that can be easily secured.

SPECIFICATIONS

LISTINGS

- Open lattice curtain meets and exceeds New York City visibility code requirements.

SIZE

- Grilles can be manufactured to accommodate openings over 60' wide by 30' high.

OPERATION

- Motor, Chain, Hand-Crank or Push-Up operation available based on size, weight or frequency of operation.
- Battery backup available to ensure operation in the event of power failure or blackout.

MATERIALS & FINISHES

- Typical rod finish is Galvanized Steel; typical sleeve and spacer finish is Mill Aluminum or Clear Anodized.
- Additional options include: White, Black, Galvanized, Stainless Steel, Galvalume, Prime Painted Galvanized and Powder Coated.
- Plastic rod covers available, consult factory.

BOTTOM BARS

- Bottom bar options include: Single Angle, Double Angle, Tubular (extruded alum.) or "T" bottom bar.
- Bottom Bars have typical Mill Finish.



HOOD & COVERS

- Hoods are typically furnished if the coil is exposed. If provided, hoods are Steel Galvanized Finish.
- Additional Finish Options: Stainless Steel, Galvalume, Prime Painted and Powder Coated.
- Standard shape is round cover; options for squares or hexagonal available upon request.

LOCKING

A. Chain Operation: Wall mounted chain keeper or zinc plated steel slide bolt with padlock provisions.

B. Push-Up or Hand-Crank Operation: Slidelocks, Round Locks or Cylinder Locks for locking at bottom bar (bottom bar design effects locking option available).

C. Motor Operator: No additional locking required as motor has automatic feature to prevent door from being lifted.

- Additional locking mechanisms include: Slidelocks, Round Locks or Cylinder Locks for locking at bottom bar (bottom bar design effects locking option available).

CONTACT US

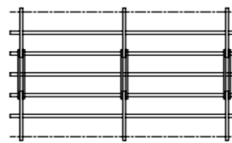
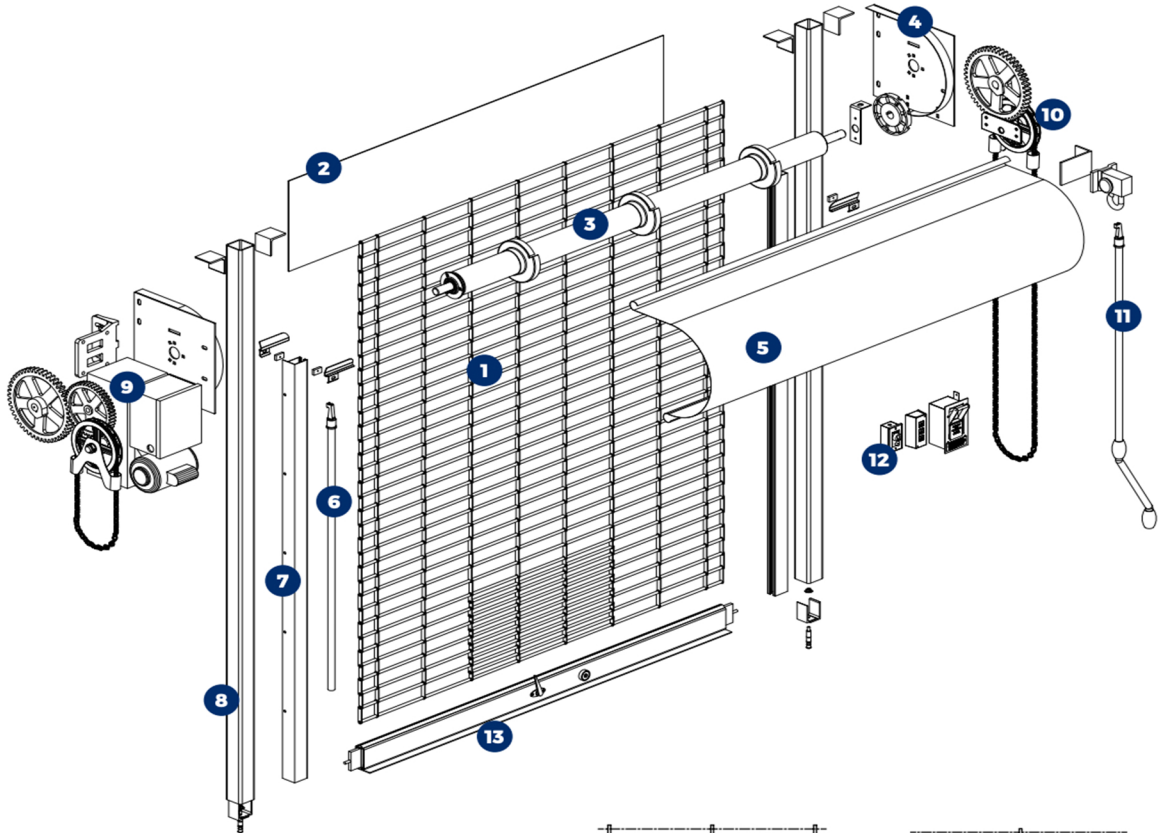
Best Rolling Manufacturer, Inc.
9780 NW 79 Avenue
Hialeah Gardens, FL 33016

P: 305-698-3550
F: 305-698-3552
www.bestdoor.us

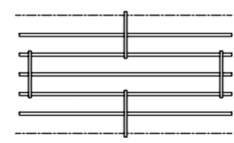
ROLLING SECURITY GRILLE

PARTS & ACCESSORIES

COMPONENTS



Straight Lattice



Brick Pattern

1. **CURTAIN** - Typical 2.0" x 9.0" openings. Available in solid or hollow rod.
2. **FASCIA** - Optional for installations with no header to cover exposed coil.
3. **TORSION - SPRING PIPE ASSEMBLY**
4. **HEAD PLATE** - Size varies based on door dimensions.
5. **COVER** - Standard round shape, supplied when coil is exposed.
6. **PUSHUP OPERATION** - Pull hook provided.
7. **GUIDES** - Additional types and configurations available based on job type.
8. **STEEL TUBE SUPPORTS** - Provided for installation when there is no jamb.
9. **MOTOR OPERATION** - Additional types and configuration available based on job type.
10. **CHAIN OPERATION** - Allow for minimum 5.0" sideroom clearance.
11. **CRANK OPERATION** - Allow for minimum 2.0" sideroom clearance.
12. **OPERATION ACCESSORIES** - Additional accessories and finishes available.
13. **BOTTOM-BAR** - Additional types, finishes and locking options available.