

## FIRE RATED DOOR

### MODEL

Fire Doors combine all of the durability and security with the added feature of UL Fire-Rated Protection. Ensures that your personnel and property are protected in the event of a fire with heavy-duty, 30 / 60 / 90 minute UL fire and smoke rated closures. Fire Door closures can also be equipped to accommodate interaction with existing Fire Alarms and Life Detection systems to ensure the utmost in security and safety. Available also as a Shutter Design with a smaller slat profile to accommodate even tight headroom conditions.

### SPECIFICATIONS

#### LISTINGS

- This door qualifies for wind, fire, smoke and/or sound rating.
- Additional components required.

#### SIZE

- 56' wide, 24' high standard construction.

#### ADDITIONAL FIRE OPERATION

- Fire Motor: Furnished by request, UL approved motor allowing the door to descend at a controlled rate. Can be activated by a central fire alarm, smoke detector, emergency fire release, fusible links and or a combination of the previously stated options.
- Fire Chain Release Mechanism: Furnished by request, same functions as a fire motor at controlled rate of descend. Can be operated as a typical Chain Hoist to open/close/stop door.

#### MATERIALS & FINISHES

- Curtains have exterior Mill Finish, White, and Black.
- Additional options include: Galvanized, Stainless Steel, Galvalume, Prime Painted Galvanized, and Powder Coated.
- Exterior skin is available in 24, 22, 20 and 18 gauge.

#### BOTTOM BARS

- Bottom bar options include: Single Angle, Double Angle, Tubular (extruded alum.) or "T" bottom bar.
- Bottom Bars have typical Mill Finish.
- Additional options: Clear Anodized, Galvanized, Stainless Steel, Hot Rolled Steel, Powder Coated and Paint.



#### HOOD & COVERS

- Hoods are typically furnished if the coil is exposed. If provided, hoods are Steel Galvanized Finish.
- Additional Finish Options: Stainless Steel, Galvalume, Prime Painted and Powder Coated.
- Standard shape is round cover; options for squares or hexagonal available upon request.
- Motor cover available for preventing weather intrusions and security protection.
- Covers can be provided for all exposed mechanical parts, consult factory.

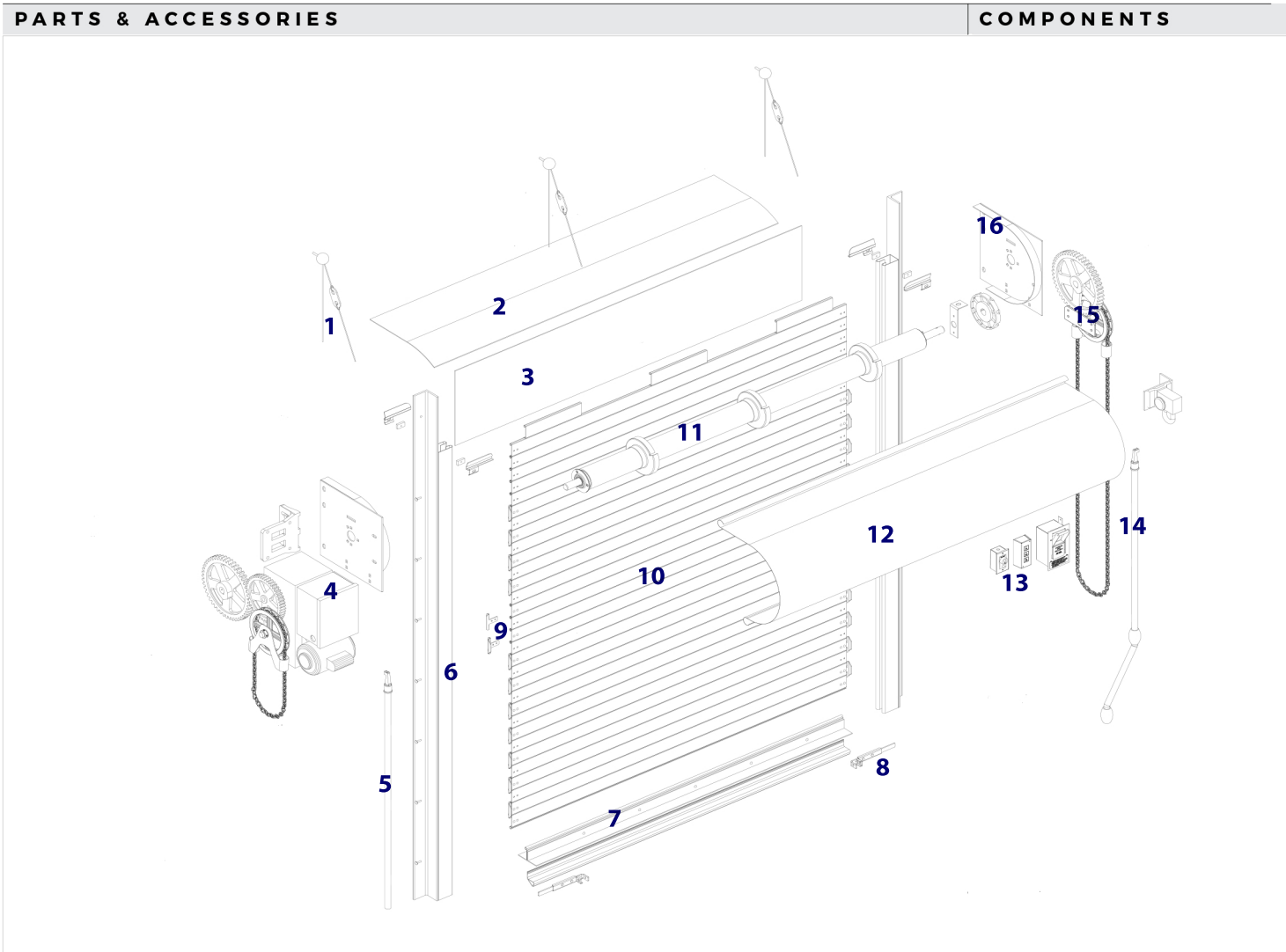
#### LOCKING

- A. Fire Chain Release: Wall mounted chain keeper or zinc plated steel slide bolt with padlock provisions.
  - B. Push-Up: Slidelocks, Round Locks or Cylinder Locks for locking at bottom bar (bottombar design effects locking option available).
  - C. Motor Operator: No additional locking required as motor has automatic feature to prevent door from being lifted.
- Additional locking mechanisms include: Slidelocks, Round Locks or Cylinder Locks for locking at bottom bar (bottom bar design effects locking option available).

### CONTACT US

Best Rolling Manufacturer, Inc. P: 305-698-3550  
9780 NW 79 Avenue F: 305-698-3552  
Hialeah Gardens, FL 33016 [www.bestdoor.us](http://www.bestdoor.us)

# FIRE RATED DOOR



1. **FIRE LINKS**
2. **FIRE HOOD BAFFLE**
3. **FASCIA** - Optional for installations with no header to cover exposed coil.
4. **MOTOR OPERATION**
5. **PUSHUP OPERATION** - Pull hook provided.
6. **GUIDES**
7. **BOTTOM-BAR**
8. **SIDE LOCKS**
9. **WINDLOCKS** - Used for Hurricane Code doors.
10. **CURTAIN** - Available in 2.5" regular slat.
11. **TORSION-SPRING PIPE ASSEMBLY**
12. **COVER** - Standard round shape, supplied when coil is exposed.
13. **OPERATION ACCESSORIES**
14. **CRANK OPERATION** - Allow for minimum 2.0" sideroom.
15. **CHAIN OPERATION** - Allow for minimum 5.0" sideroom clearance.
16. **HEADPLATE** - Size varies based on door dimensions.