

COUNTER DOORS & SHUTTERS

MODEL

Counter Doors & Shutters are used in both interior and exterior applications. Built to exact opening specifications using compact guides, slats, brackets and hoods, they offer a more streamlined look than traditional rolling doors. Offering a custom appearance (with no exposed edges) and fast installation, slip-in units arrive ready to be set into existing walls. Often used in Cafeterias, Stadiums, Arenas, Hospitality and Educational Facilities, Public Spaces, Healthcare Offices and many other applications.

SPECIFICATIONS

SLATS

- Manufactured in 1.5" baby slat.

OPERATION

- Motor, Chain, Hand-Crank or Push-Up Operation available based on weight or frequency of operation.
- Battery Backup available to ensure operation in the event of power failure or blackout.

BOTTOM BARS

- Bottom Bar options include: Double Angle.
- Additional options: Clear Anodized, Galvanized, Stainless Steel, Hot Rolled Steel, Powder-Coated and Paint.

MATERIALS & FINISHES

- Curtains have typical material construction of Steel slats.
- Aluminum, Stainless Steel and Galvalume available upon request, consult factory for additional cost.
- Standard finishes in Galvanized, Primed Grey and Primed White.
- Powder Coating finishes available upon request at an additional cost.
- Mill and Anodized finishes for aluminum parts available upon request at an additional cost.

HOOD

- Hoods are typically furnished if the coil is exposed; if provided hoods are Steel Galvanized finish and Aluminum.
- Standard shape is round cover; options for squares or hexagonal upon request.



GUIDE / TRACK CONFIGURATIONS

- Guides and track can be combined in a series of ways to accommodate sideroom requirements.
- E-Guide, Z-Guide, F-Guide and Pack-Out can be provided either welded or bolted.

LOCKING

- Chain Operation: Wall mounted chain keeper or zinc plated steel slide bolt with padlock provisions.
- Push-Up or Hand-Crank Operation: Slide Locks, Round Locks or Cylinder Locks for locking at bottom bar (bottom bar design effects locking option available).
- Motor Operator: No additional locking required as motor has automatic feature to prevent door from being lifted.

FAST ACTING DOORS

- For high traffic openings or where airflow or temperature control is critical.
- Doors can be designed to operate at more than twice the speed of typical doors or up to 2ft./sec.

CYCLE USAGE

- Standard up to 10,000 cycles per year with High Cycle performance.

CONTACT US

Best Rolling Manufacturer, Inc.
9780 NW 79 Avenue
Hialeah Gardens, FL 33016

P: 305-698-3550

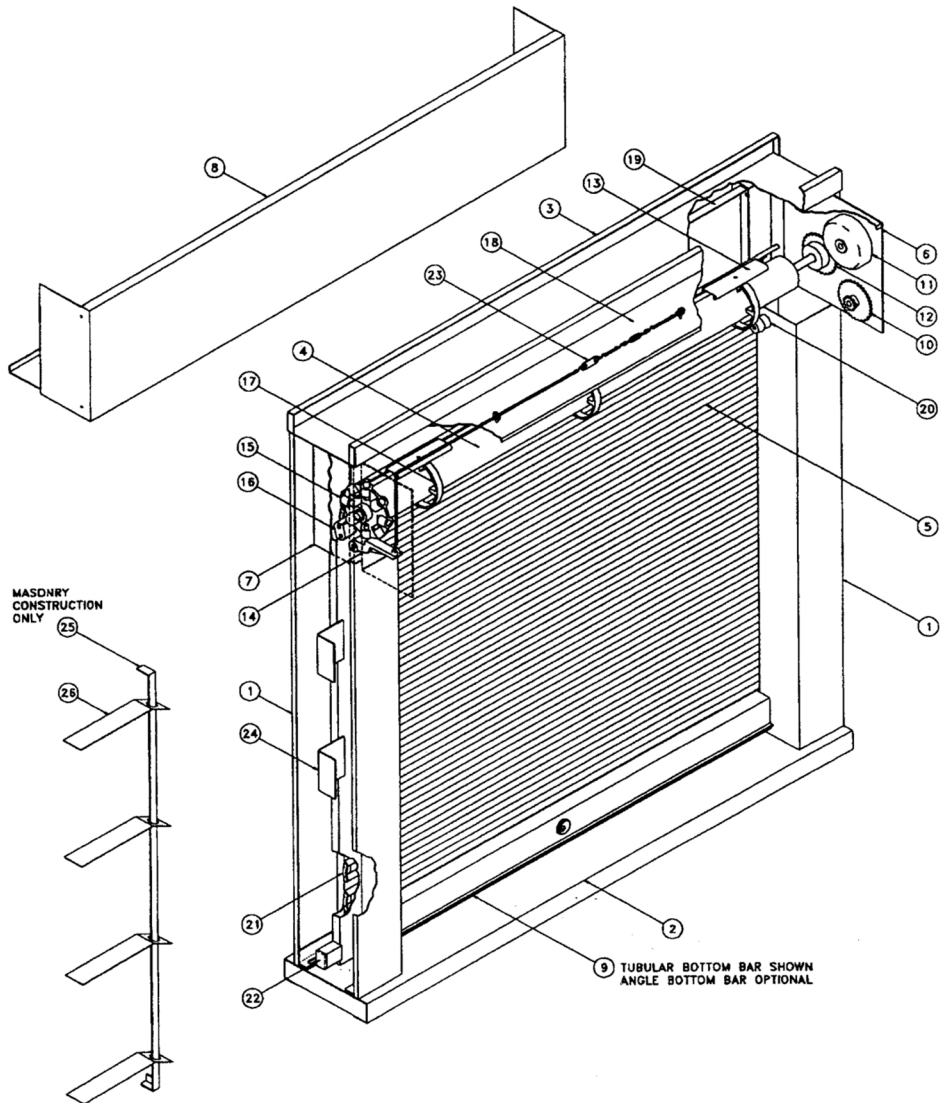
F: 305-698-3552

www.bestdoor.us

COUNTER DOORS & SHUTTERS

PARTS & ACCESSORIES

COMPONENTS



1	JAMBS	9	BOTTOM BAR	20	RUBBER STOPPERS
2	SILL ASSEMBLY	13	FASTENING SECTION SLATS	21	ENDLOCKS (RIVETED TO SLATS)
3	HEAD ASSEMBLY	15	ADJUSTING WHEEL WITH PIN	22	PLASTER GUARDS
4	BARREL (COUNTERBALANCE SHAFT)	13	RINGS	24	DRYWALL ANCHORS
5	CURTAIN SLATS	18	TOP CLOSURE	25	MASONRY MOUNTING ANGLE
8	HOOD	19	FASCIA	26	MASONRY ANCHORS